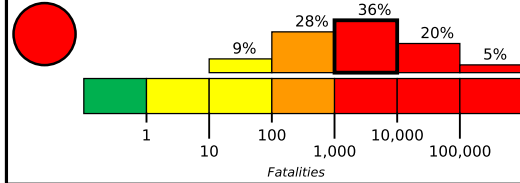


M 6.9, Shakeout SD-TJ Scenario

Origin Time: 2017-05-25 10:00:00 UTC (Thu 03:00:00 local)
Location: 33.0100° N 117.3200° W Depth: 7.7 km

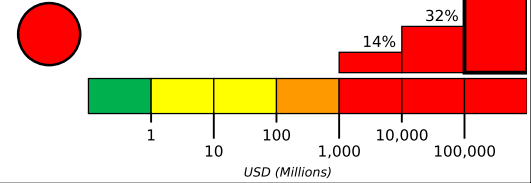
Estimated Fatalities



Red alert for shaking-related fatalities and economic losses. High casualties and extensive damage are probable and the disaster is likely widespread. Past red alerts have required a national or international response.

Estimated economic losses are 0-2% GDP of the United States.

Estimated Economic Losses

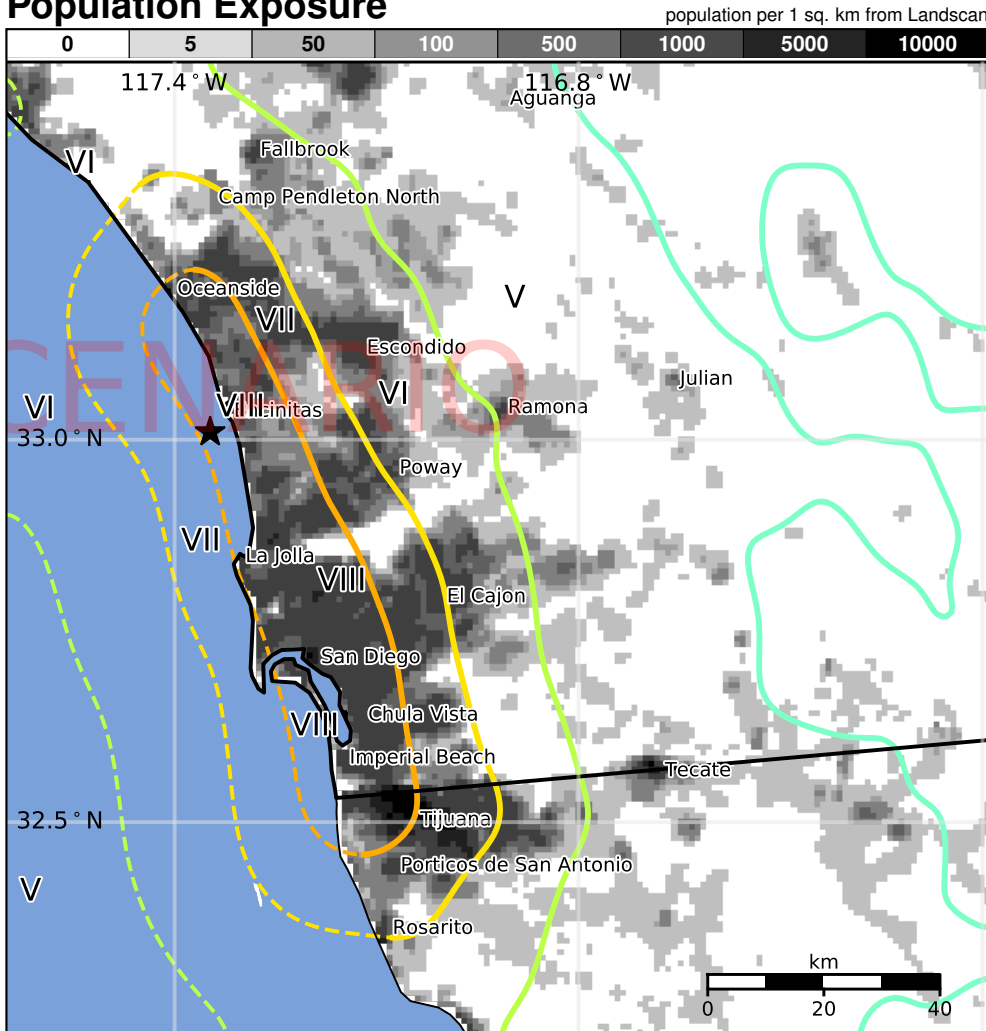


Estimated Population Exposed to Earthquake Shaking

ESTIMATED POPULATION EXPOSURE (k=x1000)	—*	—*	6k*	161k	904k	1,947k	1,950k	344k	0	
ESTIMATED MODIFIED MERCALLI INTENSITY	I	II-III	IV	V	VI	VII	VIII	IX	X+	
PERCEIVED SHAKING	Not felt	Weak	Light	Moderate	Strong	Very Strong	Severe	Violent	Extreme	
POTENTIAL DAMAGE	Resistant Structures	None	None	None	V. Light	Light	Moderate	Mod./Heavy	Heavy	V. Heavy
	Vulnerable Structures	None	None	None	Light	Moderate	Mod./Heavy	Heavy	V. Heavy	V. Heavy

*Estimated exposure only includes population within the map area.

Population Exposure



Structures

Overall, the population in this region resides in structures that are a mix of vulnerable and earthquake resistant construction. The predominant vulnerable building types are adobe block with concrete bond beam and unreinforced brick masonry construction.

Historical Earthquakes

Date (UTC)	Dist. (km)	Mag.	Max MMI(#)	Shaking Deaths
1986-07-13	49	5.8	V(9,528k)	0
1994-01-17	172	6.7	IX(73k)	33
1971-02-09	183	6.6	IX(21k)	65

Recent earthquakes in this area have caused secondary hazards such as landslides and liquefaction that might have contributed to losses.

Selected City Exposure

from GeoNames.org

MMI	City	Population
IX	San Diego	1,307k
IX	Coronado	19k
IX	Imperial Beach	26k
IX	La Jolla	43k
VIII	Del Mar	4k
VIII	Encinitas	60k
VIII	Carlsbad	105k
VIII	Chula Vista	244k
VIII	Oceanside	167k
VIII	Tijuana	1,376k
VI	Escondido	144k

bold cities appear on map.

(k = x1000)

PAGER content is automatically generated, and only considers losses due to structural damage. Limitations of input data, shaking estimates, and loss models may add uncertainty.
<http://earthquake.usgs.gov/data/pager/>

Event ID: usshakeout_sdtj2015_hybridvs30_tj.se